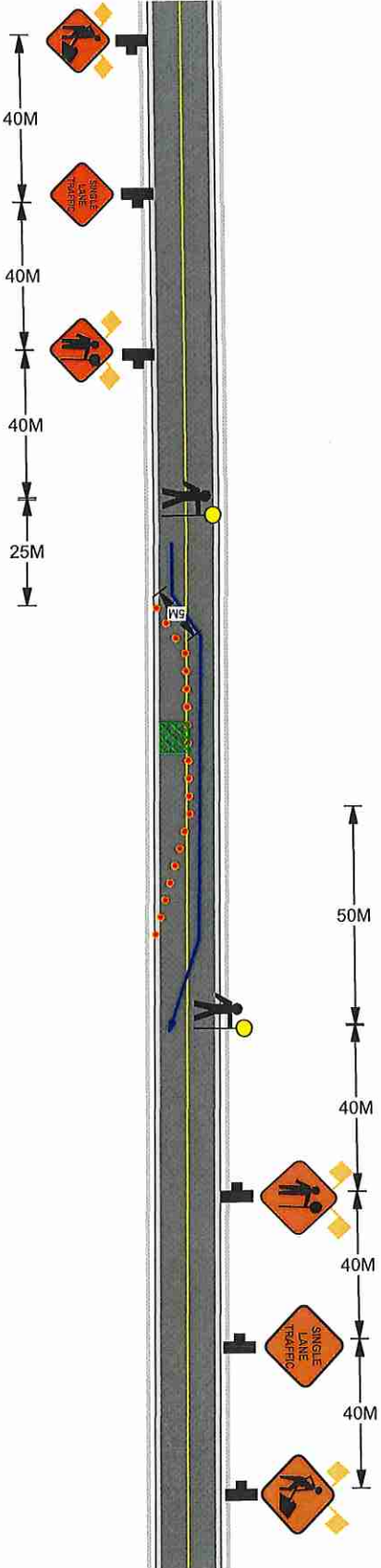









JULY 2020  
 HOURS OF OPERATION FROM \_\_\_\_\_  
 WORK WILL TAKE 1 DAY TO COMPLETE \_\_\_\_\_



**NOTE:**

SPEED LIMIT ON YALE ROAD IS 50KM PER HOUR  
 ALL SIGNS WILL BE PLACED ON TRIPPOD STANDS WITH FLAGS  
 ALL SIGNS ON ALL SIDE STREETS WILL BE PLACED ON TRIPPOD STANDS WITH FLAGS  
 ALL SIDEWALKS - CROSSWALK AND BUS STOPS WILL REMAIN OPEN AT ALL TIMES  
 TRAFFIC CONTROL WILL ASSIST WITH DRIVEWAYS EFFECTED BY WORK ZONE CLOSURE

**LEGEND**

- DIRECTION TRAFFIC FLOW 
- NORTH MARKER 
- TUBULAR MARKERS 
- WORK AREA 
- SIGN STANDS 
- TRAFFIC CONTROLLER 
- BUS STOP 
- FLASHING ARROW BOARD TRUCK 